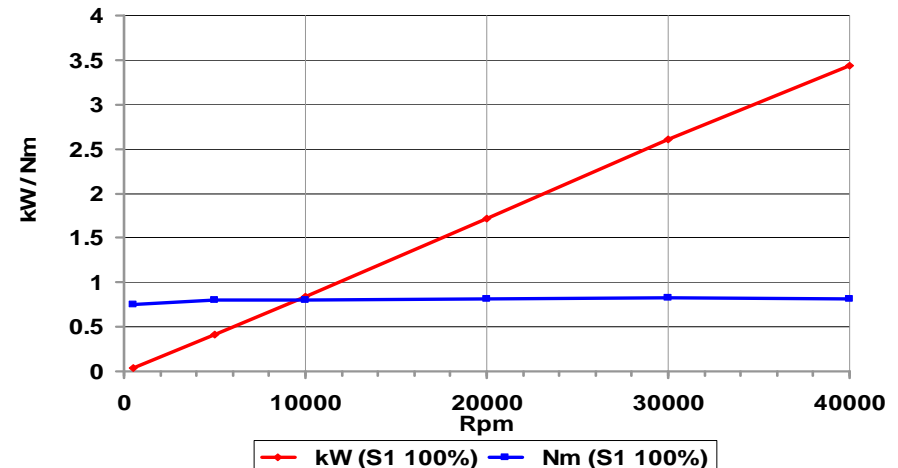


Spindle Datasheet

VSC 4084



MOTOR	
Speed Range	500 – 40,000 rpm
Torque (S1-100%)	0.8 N-m [7.1 in-lbs] (S 1)
Power	3.4 kW [4.6 hp] at 40,000 rpm (S 1) 4.2 kW [5.6 hp] at 40,000 rpm (S 6)
Frequency Range	16.7 - 1,333 Hz
Voltage	380 V @ 1333 Hz
Maximum Amperage	10 A (S 1)
Motor Type	AC asynchronous, 4-pole, 3-phase
SPINDLE DRIVE	
Drive Type	Type PSS frequency converter
BEARINGS	
Bearings	Four (4) angular-contact, hybrid-ceramic bearings, ABEC 7/9 precision
Mounting	Front and rear duplex sets, mounted in "O" arrangement with shaft length compensation to provide constant spring pre-load
Lubrication	Permanent grease lubrication
Labyrinth Air-Seal	0.2 bar [3 psi] positive air pressure at bearing seal
SHAFT DATA	
Stiffness at spindle nose	Axial: 65 N/μm [370,000 lb/in] Radial: 45 N/μm [257,000 lb/in]
SPINDLE COOLING	
Cooling	Liquid circulation through spindle housing using Type RCS 1001 Refrigerated Cooling System
TOOL CLAMPING	
Taper	Automatic HSK-E25 taper clamping system with spring-loaded drawbar
Clamping Force	> 2800 N [630 lb]
Toolchange	Built-in pneumatic toolholder release cylinder, 5.5 bar [80 psi] minimum air pressure required
Toolholder Type	Type ATC 4-25-16 toolholder (Cat. #084530), HSK-E25 DIN 69893 with Ø28 V-flange
Collets	Type SRP 16 collets (10mm, 3/8" maximum collet capacity)
Taper Purge	0.4 – 0.5 bar [6 – 7 psi] air blast through taper at toolholder release
SENSORS	
Motor Protection	PTC thermistor in stator
Speed Sensing	Tachometer
Tool-in-position Sensors	Four (4) PNP proximity sensors to detect toolholder position and release-cylinder position
CONNECTIONS	
	<ul style="list-style-type: none"> liquid cooling (2 x Ø8mm tubes) labyrinth air seal (1 x Ø6mm tube) taper purge (1 x Ø6mm tube) ATC (2 x Ø6mm tubes) Power Cable (1 meter length with connector)
MOUNTING / WEIGHT	
Housing Diameter	Ø 80 mm h5
Mount Type	Type 9080 plane mount
Net Weight	10 kg [22 lb]



Spindle Datasheet

VSC 4084



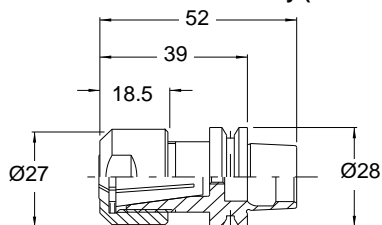
VSC 4084 Standard Equipment:

VSC 4084 spindle Cat. #550354 <ul style="list-style-type: none"> 1-meter power/sensor cable with 5+10 connector 1-meter encoder cable with 9-pin connector 	Wrenches: <ul style="list-style-type: none"> 1 - 18 mm vise wrench #412642 1 - SW24 open end wrench #412650
Documentation: <ul style="list-style-type: none"> 1 operating instruction 1 safety instruction 	Cleaning Kit: <ul style="list-style-type: none"> 1 HSK 25 taper wiper #018000 1 SRP 16 taper wiper #412662 1 round brush #477450 1 straight brush #477451

VSC 4084 System Components (ordered separately):

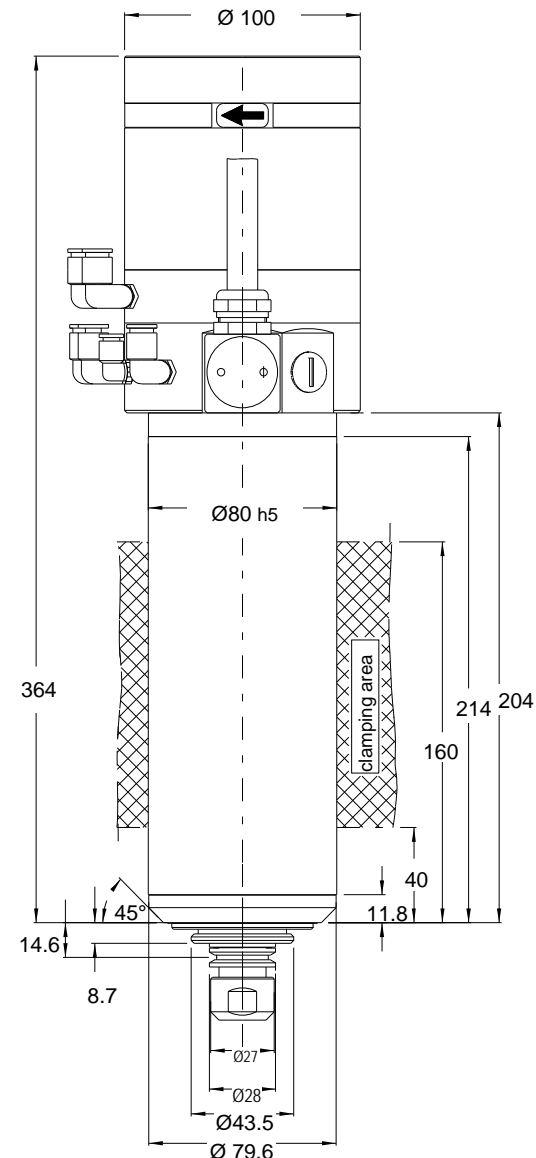
Type PSS Frequency Converter: Includes: <ul style="list-style-type: none"> - Frequency converter - Input/out chokes - Power supplies 
Type RCS 1001 Refrigerated Cooling System: Cat. #330696 (230V, 1-phase, 60 Hz) Cat. #330695 (230V, 1-phase, 50 Hz) 
Type PPU Pneumatic Preparation Unit: Cat. #333004 

ATC 4-25-16 Toolholder Assembly (HSK-E25)



VSC 4084 Accessories (ordered separately):

Type SRP 16 Collets:  <ul style="list-style-type: none"> Cat. #410723, 3 mm Cat. #410726, 6 mm Cat. #410728, 8 mm Cat. #410730, 10 mm Cat. #410762, 1/8" Cat. #410763, 3/16" Cat. #410764, 1/4" Cat. #410766, 3/8"
Type ATC 4-25-16 Toolholder Assembly (HSK-E25): Cat. #084530 
Type 9080 Plane Mount: Cat. #408705 
Extension Cable Sets (2 cables per set): Cat. #332780, 3m [9.6 ft] Cat. #332781, 5m [16 ft] 
Base Tubing Kit: Cat. #411681 (for liquid cooling, and labyrinth air-seal connections) <ul style="list-style-type: none"> 5m Ø6mm tubing (#328853) 10m Ø8mm tubing (#328856) 1 tubing cutter (#329378) 2 adapter fittings (#330629)
ATC Tubing Kit: Cat. #411682 (for ATC connections) <ul style="list-style-type: none"> 15m Ø6mm tubing (#328853)



Fischer Precise USA, Inc.
 3715 Blue River Avenue
 Racine, WI U.S.A. 53405
 Phone: (262) 632-6173
 Fax: (262) 632-6730
 Email: info@fischerprecise.com
www.fischerprecise.com