

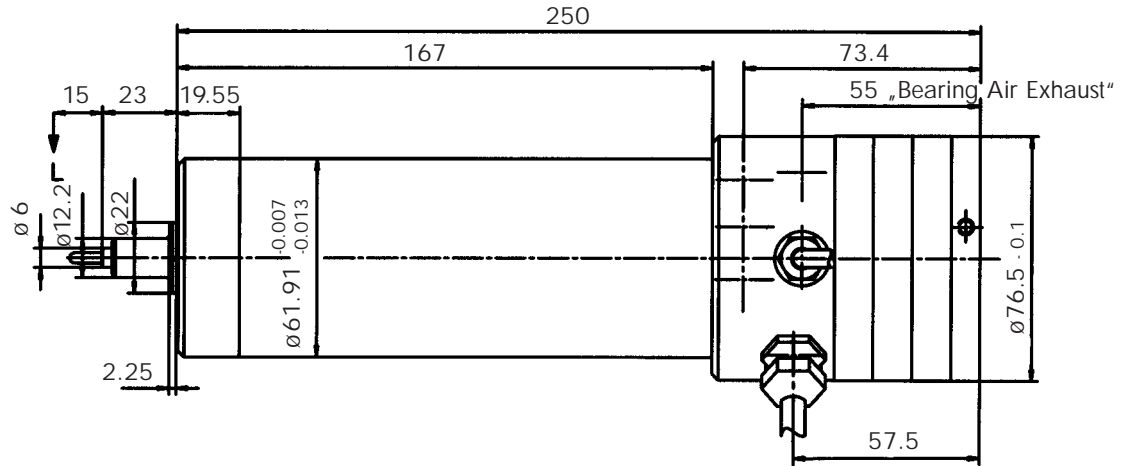
Technical Data ASC 125

Speed range	15 000 – 125 000 rpm
Max. drill diameter	≤ 1/4" (6.35 mm)
Static runout at L ¹⁾	≤ 5 μm
Dynamic runout at L ¹⁾	≤ 10 μm
Nominal output power (S1)	0.3 kW at 40 000 rpm
Voltage range	37- 200 V (84 V @1000 Hz)
Radial failure load	
at L, static	60 N
at L ¹⁾ , dynamic, top speed	100 N
Axial failure load (push)	240 N
Collet clamping torque (when new)	180 Ncm
Collets	»D3-125« # ASC125127480.00 Ø 1/8"
Mounting diameter	61.91 mm
Bearing air pressure	5.5 – 6.0 bar
Bearing air flow	< 70 NI/min
Min. coolant flow	1.5 l/min
Frequency range	250 – 2 083 Hz
Current	
Idle	3.0 A
S 1	3.5 A
Tachometer	Standard
PTC Thermistor	1.2 kΩ
Axial acceleration	≤ 5 g
Clean taper air	Constant
Weight	3.9 kg

¹⁾L: 15 mm in front of collet

Dimensions ASC 125

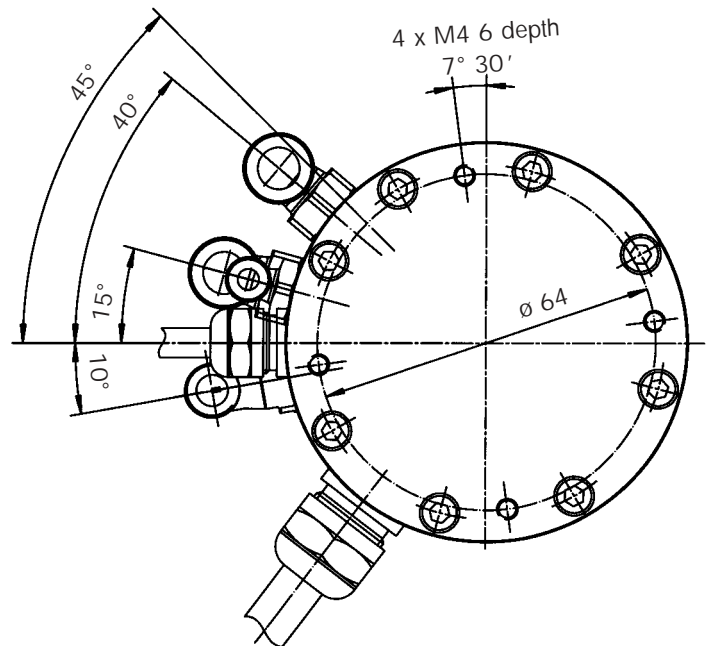
For customized solutions please consult precise®



Available Accessories:

- Collet 1/8"
- Service Set
- Operating manual
- Collet wrench
- Filter-regulator for tool change
- Frequency converters,
- Circulating cooling systems,
- Machine Tool Mount

We reserve us the right to make design changes without prior notice



- *Ihr Partner in der Nähe:*
- *For sales and support contact:*
- *Pour une information complète, contact:*

precise technologies GmbH
 Hans-Böckler-Strasse 17
 D-40764 Langenfeld, Germany
 T: +49 217 320 535 0
 F: +49 217 320 535 99
 info@precise-technologies.de
 www.fischerprecise.com

FISCHER PRECISE USA, Inc.

3715 Blue River Avenue
 P.O. Box 085000
 Racine, WI 53405, USA
 P: +1 800 333 6173
 F: +1 262 632 6730
 info@fischerprecise.com
 www.fischerprecise.com