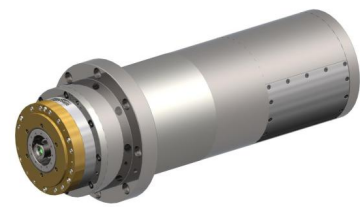


Spindle Catalog



Article No.	.	104532	106560	102369
Spindle name	.	MFW-1412/36/26 VC HSK-E50	MFW-1406/24/1 VC HSK-E50	MFW-1412/20/12 VCU HSK-E50
Toolinterface	.	HSK-E50	HSK-E50	HSK-E50
Tool clamping system	.	hydraulic	hydraulic	hydraulic
Diameter	mm	140	140	140
Length	mm	455	455	455
Weight	kg	38	38	37
Operating position	.	any (tooladapter down)	any (tooladapter down)	any (tooladapter down)
Sense of rotation	.	left + right	left + right	left + right
Speed max.	rpm	36000	24000	20000
Frequency	Hz	1200	800	667
Power S1	kW	15.2	15	15.2
Speed fieldweakening	rpm	12000	6200	12000
Torque S1	Nm	12.1	23.1	12.1
Voltage S1 max.	V	350	490	316
Current S1 max.	A	59	60	59
Motor type	.	AC async star	AC sync star	AC async star
Bearing lubrication	.	oil-air (DLS)	grease	grease
Frontseal pressure	bar	2-3	2-3	2-3
Spindle cooling system	.	front + motor + rear	front + motor + rear	front + motor
Spindle cooling medium	.	water- or oilbased fluid	water- or oilbased fluid	waterbased fluid
Spindle shaft cooling	.	no	no	no
Speed control	.	vector control	vector control	vector control



Spindle Catalog

Article No.	.	103815
Spindle name	.	MFW-1412/36/20 VCU HSK-E50 PNP
Toolinterface	.	HSK-E50
Tool clamping system	.	hydraulic
Diameter	mm	140
Length	mm	500
Weight	kg	44
Operating position	.	any (tooladapter down)
Sense of rotation	.	left + right
Speed max.	rpm	36000
Frequency	Hz	1200
Power S1	kW	15.2
Speed fieldweakening	rpm	12000
Torque S1	Nm	12.1
Voltage S1 max.	V	350
Current S1 max.	A	59
Motor type	.	AC async star
Bearing lubrication	.	oil-air (DLS)
Frontseal pressure	bar	2-3
Spindle cooling system	.	front + motor + rear
Spindle cooling medium	.	water- or oilbased fluid
Spindle shaft cooling	.	yes
Speed control	.	vector control

