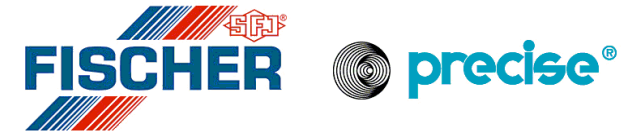
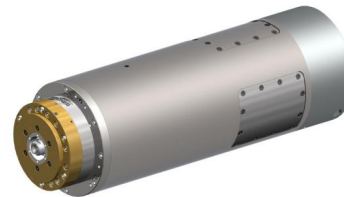


## Spindle Catalog



Article No.	.	106169	105622	103742
Spindle name	.	<b>MFW-1224/60/2 VC HSK-E32 PNP</b>	<b>MFW-1260/10 VC HSK-E32</b>	<b>MFW-1224/42/7 VC HSK-E40 PNP</b>
Toolinterface	.	HSK-E32	HSK-E32	HSK-E40
Tool clamping system	.	hydraulic	hydraulic	hydraulic
Diameter	mm	120	120	120
Length	mm	365	365	410
Weight	kg	30	21	25
Operating position	.	any (tooladapter down)	any (tooladapter down)	any (tooladapter down)
Sense of rotation	.	left + right	left + right	left + right
Speed max.	rpm	60000	60000	42000
Frequency	Hz	2000	1000	1400
Power S1	kW	8.5	11	15
Speed fieldweakening	rpm	24000	60000	24000
Torque S1	Nm	3.4	1.75	5.9
Voltage S1 max.	V	350	330	380
Current S1 max.	A	22	25	38
Motor type	.	AC async star	AC async star	AC async star
Bearing lubrication	.	oil-air (DLS)	oil-air (DLS)	oil-air (DLS)
Frontseal pressure	bar	2-3	2-3	2-3
Spindle cooling system	.	front + motor + rear	front + motor + rear	front + motor + rear
Spindle cooling medium	.	waterbased fluid	waterbased fluid	water- or oilbased fluid
Spindle shaft cooling	.	no	no	no
Speed control	.	vector control	vector control	vector control



## Spindle Catalog



Article No.	.	52245-006	105627
Spindle name	.	<b>MFW-1230/42/4 HSK-E40</b>	<b>MFW-1230/70/2 HSK-E25</b>
Toolinterface	.	HSK-E40	HSK-E25
Tool clamping system	.	hydraulic	hydraulic
Diameter	mm	120	120
Length	mm	465	341
Weight	kg	26.1	19
Operating position	.	any (tooladapter down)	any (tooladapter down)
Sense of rotation	.	left + right	left + right
Speed max.	rpm	42000	70000
Frequency	Hz	1400	1170
Power S1	kW	14	4
Speed fieldweakening	rpm	30000	30000
Torque S1	Nm	4.45	1.3
Voltage S1 max.	V	380	200
Current S1 max.	A	30	20
Motor type	.	AC async star	AC async star
Bearing lubrication	.	oil-air	oil-air (DLS)
Frontseal pressure	bar	2-3	2-3
Spindle cooling system	.	motor	front + motor + rear
Spindle cooling medium	.	waterbased fluid	water- or oilbased fluid
Spindle shaft cooling	.	no	no
Speed control	.	sensor S1	sensor S1

